

SRP Whisperwall 2-piece Split Nog Track Installation

This unique 2-piece split nog track has been specifically designed for use with SRP Whisperwall Acoustic partition system.

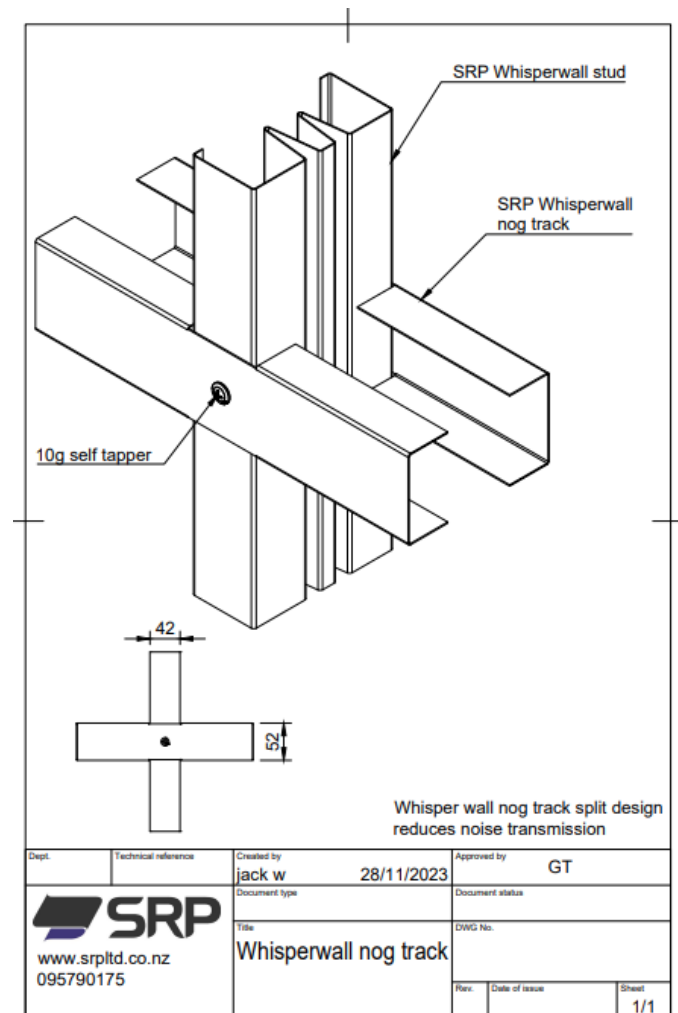
- Allows maximization of acoustic (STC) performance and reduces sound transmission between spaces.
- SRP Split Nog tracks are face-fixed to each side of the SRP WW Acoustic stud wall at the required height.
- Split Nog tracks are notched-out at each stud location e.g. typical installation is @ 600 centres.
- The SRP WW split track is manufactured and supplied in 3m length (0.75BMT thickness).
- **FIXINGS:** 10g x 16mm Self-Drilling Tek Screws (to each SRP WW Acoustic steel stud).

Deflection Head Nog Requirements

With full height WW partition installation, SRP Deflection track is used at the partition head (to allow for +/-mm upward/downward movement).

The SRP WW Acoustic studs are not to be fixed to the deflection track - a continuous row of nogging (keeps SRP WW studs aligned, and which studs/ wall linings can be fixed to) must be installed approx. 100m down from the deflection track.

Please refer www.srp ltd.co.nz for downloadable CAD Details:



Technical Requirements of the NZBC

B 1.3.3 (a) – Self Weight

B1.3.3 (f) – Earthquake

B 1.3.3 (h) – Wind

B 2.3.1 - Durability 50 years

G 6.3.1 – The sound transmission class of walls, floors

SRP Products are manufactured from Z275 Galvanised, G250 Steel - which is non-combustible.

Evidence - Methodology Summary of NZBC Compliance

1. ASNZ4600 (Steel chemical composition, gauge grade tolerance, galvanised coating, testing statistics, yield point etc.

2. NZS4129 (seismic)

3. NZS3404 (fabrication)

4. AS1397 (sheet and strip)

5. AS1538 (cold formed structures)

6. ASZLNZ1170 (steel structures)

7. AS/NZS2785 (Suspended Ceilings)

Compliance Pathways

B1/ VM1

An Engineered design is required - this needs to be done by a suitably qualified Engineer, who can also provide a PS-1.

B2 Durability

SRP uses GALVSTEEL® manufactured by New Zealand Steel. The continuous hot-dip galvanized Zinc coating conforms to the industry standard required for this application; Z275 (275 g/m² total). New Zealand Steel made GALVSTEEL® for framing is backed by a 50-year Durability Statement to demonstrate compliance with NZBC Clause B2-Durability, when used and maintained as referred to in the current New Zealand Steel's Durability Statement.

G6 Airborne

G6/ AS1

Criteria – Design Guidelines

Please contact Steel Rollformed Products Ltd - for Design Assistance, or visit www.srpltd.co.nz

An Engineered design is often required - this needs to be done by a suitably qualified Engineer, who can also provide a PS-1.

Please refer SRP Wall Systems/ Ceiling Systems Handbook for installation requirements or visit www.srpltd.co.nz

Installation Requirements

Please refer to SRP Wall Systems or SRP Ceiling Systems Handbooks (pdf).

For SRP Wall & Ceiling System Installation instructions/ downloadable CAD details refer: www.srpltd.co.nz

Maintenance

No maintenance required - SRP Galv. Steel products/ systems are typically concealed (within walls/ ceilings), once installed.

Scope of use

This varies between SRP Products/ systems... please refer to individual SRP product installation instructions via SRP website.